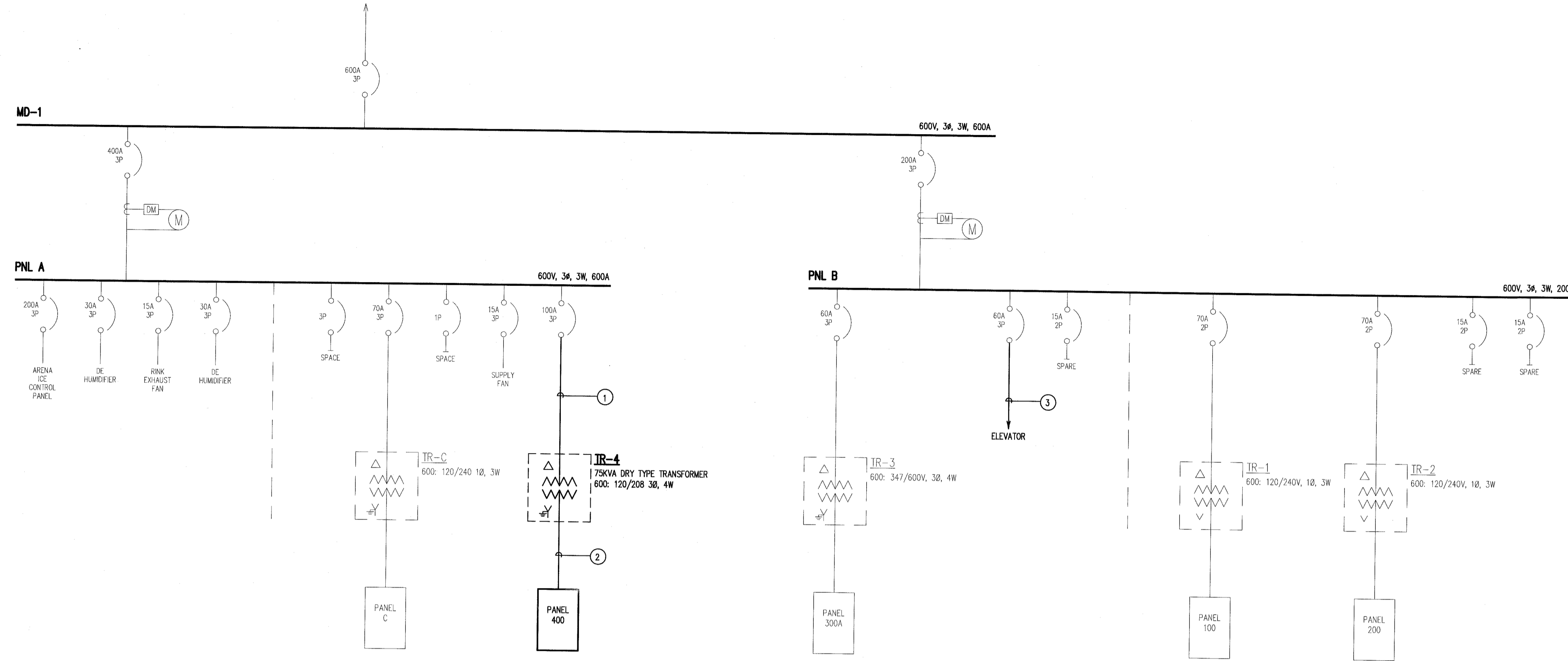


CENTURY ARENA SITE REVIEW



NOTES
 LIGHTER FONT REPRESENTS EXISTING EQUIPMENT.
 DARKER FONT REPRESENTS NEW EQUIPMENT.

FEEDER SCHEDULE		
1	3# 3RW90 IN 35mmC	100A
2	4# 3/0 RW90IN 41mmC	200A
3	3# 8MI CABLE	50A

*** PANEL - 400 (120/208V/3Φ/4W/225A MAINS)**

LTC	1	22	AUTO DOOR	
LTC	2	23	REC	2R
LTC	3	24	REC	2R
LTC	4	25	ESPP-1 (3/4 HP)	
	5	26	WTSPP-1 (1/3 HP)	
	6	27	ELEVATOR LIGHT/CONTROL	
	7	28	FF	4000
	8	29	30	
	9	30	BB	4000
	10	31	30	
	11	32	SIGNAGE EXTERIOR	
	12	33	MAGNETIC HOLD OPEN	
	13	34	REC	3R
	14	35	F-1 (1/4 HP)	
	15	36	BB	2000
	16	37	20	
	17	38	UH	2000
	18	39	20	
	19	40	SMOKE DAMPERS	
	20	41		
	21	42		

LTC	PKG	HTG	A/C	MTR	MISC	TOTAL
0.0	0.0	0.0	0.0	0.0	0.0	0.0
W/HTG	ELEV	BOIL	RAMP	LAU	KIT	
0.0	0.0	0.0	0.0	0.0	0.0	0.0

* PROVIDE INTEGRAL 200A/3P MAIN BREAKER

2.	ISSUED FOR TENDER	2012-09-28
1.	ISSUED FOR 100% REVIEW	2012-09-20

revision
 This drawing must not be scaled.
 The general Contractor must verify all dimensions, datums and levels prior to commencement of work. All errors and omissions must be reported immediately to the Architect.
 Variations and modifications to work shown on this drawing shall not be carried out without written permission from the Architect.
 This drawing is the exclusive property of the Architect and cannot be reproduced without written permission of the Architect. Reproduction must bear the name of the Architect. Copyright © 2012.



project
ELEVATOR ADDITION AND ACCESSIBILITY UPGRADES OF CENTURY ARENA
 Winnipeg, Manitoba Bid Opportunity No. 579-2012

sheet title
SINGLE LINE DISTRIBUTION & PANEL BOARD

project number: 12-003 drawing number:
 scale: N.T.S. **E4.0**
 drawn by: LB
 approved by: KEI
 date: SEP 28, 2012

